

Governor Wentworth
ARTS Council
PO Box 1578
Wolfeboro, NH
03894



SPRING 2018

wolfeboroarts.org

A quarterly publication for members and arts supporters

2

Message from
the Co-Presidents

3

WHAT'S HAPPENING
Arts Events

4

GWAC News to Note

5

GWAC Member News

6

GWAC Membership
Form 2018-19

7

regional Exhibits
& Museum Shows

*Thank you to our
member artists
for image use
of your work in
this issue:*

Judi Lemaire



MESSAGE from the Co-Presidents

It has been our pleasure to serve you for the past two years as Co-Presidents. Sadly, due to the decrease in membership, attendance, and event participation the board voted to cut back on the number of meetings but will continue the Annual Potluck/Business meeting/ Election of Officers each June and the Fall Library Member Exhibit and Reception in November. These decisions were made from the results of the member wide survey conducted in the fall of 2016.

The 2018 Library Fall Exhibit and Reception will not take place due to the library overhaul and renovations. However, the library staff have reassured us that receptions and exhibits will take place in the future.

The Governor Wentworth Arts Council is acknowledging in 2018 the 50th Anniversary of a group of concerned local citizens who came together in 1968 to bring the Arts to our community, the organization was named the Governor Wentworth Arts Council. Our board members have put together a history of all their accomplishments which will take place at our Annual meeting/Potluck/Election of Officers at the Town Hall. Hope all of you will plan to attend this wonderful celebration!

To give you an idea of all the activities GWAC presents throughout 2017-2018, please read below:

1. 50th Anniversary Celebration, Annual meeting/Potluck/Election of Officers - June 22, 2018 Town Hall 5-9pm
2. Tablescapes - April 6 - 8, 2018 Wolfeboro Inn Fundraiser
3. Art Auction at the Art Place April 28 - May 26th, 2018 Fundraiser
4. Presentation of the Visual Arts Award to a student at Kingswood Regional High School/ Technical Center, June, 2018.
5. Distribution of Grants given to the local schools and libraries 2017-18
6. Annual Committee meeting of the Priscilla Hodges Scholarship Fund, Bi-annual art workshop planning.
7. Paint Wolfeboro at Cate Park, August 15, 2018 Fundraiser
8. Ongoing art exhibits at the Huggins Hospital and Meredith Village Savings Bank
9. Painted Pumpkin Contest, Durgin Stables, October 6th, 2018
10. Library Member Exhibit and Fall Reception, 2018, Wolfeboro Library

The GWAC board hopes you will continue to support these activities to keep this organization a vital part of our community. We cannot do it without you.

Sincerely,
Di Simpson and Polly Cain, *Co-Presidents*

OFFICERS 2017-18

co-Presidents
Diane Simpson
Polly Cain

Vice President
Elizabeth Helfer

Secretary
Judi Lemaire

Treasurer
Jerome Holden

COMMITTEES

Membership & Marketing
Jeannette D'Onofrio

PAINT Wolfeboro
Madelyn Albee

Priscilla Hodges Scholarship
Nancy Piper
Treasurer: Suzette Winchester

GWAC ART-Displays
Debbie Hopkins & Martha Koons

Art in the Library
Betty Brown

**Grants to
Schools & Libraries**
Diane Simpson

TABLESCAPES
Jeannette D'Onofrio

Newsletter/eART Clips

Jeannette D'Onofrio

Email Art News to:

j@virgodesignstudio.com

(Summer Deadline: June 1, 2018)



Editorial Credits

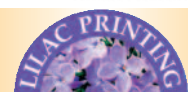
Diane Simpson, Polly Cain,
Debbie Hopkins, Jeannette D'Onofrio
Wright Museum of WWII

Photo Credits

The Village Players, Friends of Music,
Northeastern Ballet Theatre,
Wright Museum of WWII,
Gafney Library,
Judi Lemaire, Jeannette D'Onofrio

Sponsored in part by

Ashton & Company, PA
Certified Public Accountant



printing provided by:

Lilac Printing
189 Wakefield St.
Rochester, NH 03867
603-332-0511 lilacprinting.com

WHAT'S HAPPENING - arts events



HEIFETZ ON TOUR Saturday, April 14, 7:30 PM

Brewster's Anderson Hall
205 S. Main St. Wolfboro

Founded by Daniel Heifetz in 1996, the Institute offers its world-renowned summer program on the campus of Mary Baldwin College in Staunton, Virginia. Its signature "Heifetz on Tour" program is designed to create real-world performance and outreach opportunities for promising young alumni.



FREESE BROTHERS BIG BAND Saturday, May 19, 7:30 PM

Brewster's Anderson Hall
205 S. Main St. Wolfboro

The purposes of the Band are to support and encourage the development of the musical talents of the public and its members, and to foster an appreciation of music of all eras. The men and women of the band live and work throughout Central and Southern New Hampshire. They come from diverse professional and musical backgrounds and blend their years of experience to produce the distinctive sound of the Freese Brothers Big Band.



Tickets available at the door or online: wfom.org

ADMISSION
\$5.00
ALL CHILDREN MUST
BE ACCOMPANIED
BY AN ADULT
CHILDREN UNDER
AGE 8 - FREE

TOUR DATES
APRIL 2018
6 / 7 / 8
FRI / SAT / SUN
10AM - 4PM
AT
THE WOLFBORO INN
90 NORTH MAIN ST. WOLFBORO, NH

CREATIVE TABLESCAPES SETTINGS®

**CREATIVE TABLE TOP
DISPLAYS BY
ARTISTS, ORGANIZATIONS,
BUSINESSES & INDIVIDUALS**

**FUNDS SUPPORT
THE ARTS LOCALLY
IN THE SCHOOLS,
LIBRARIES AND
ARTS ORGANIZATIONS
THROUGH THE**

Governor
Wentworth
Arts Council
1963 50 YEARS 2018

**THANK YOU TO
OUR SPONSORS**

**VOTE
FOR YOUR
FAVORITE
DISPLAY!**

event hosted by
The Governor Wentworth Arts Council
a 501(c)(3) non-profit
educational arts organization
wolfboroarts.org

"... sting(s) the tear ducts as often as it tickles
the funny bone..." NY Times

CRIMES OF THE HEART

Written by **Beth Henley**

APRIL 6, 7, 13, 14 at 8:00PM
APRIL 15 at 2:00PM



Directed by Carol Bense
Produced by Joshua Spaulding

Tickets \$15 at Black's
or on-line at www.village-players.com

51 Glendon Street, Wolfboro, NH

Sponsored in part by Bruce and Kris Gurall

Crimes of the Heart is produced by special arrangement with Dramatists Play Service, New York

2018

Northeastern Ballet Theatre
presents

The Pirate and the Gypsy

A tale of adventure and romance
on the high seas

May 5 - 7pm
May 6 - 2pm
Oyster River High School,
Durham

August 9 - 7pm
Kingswood Arts Center,
Wolfboro

Tickets:
\$20 - adults
\$17.50 - seniors/students
\$60- family of 4

www.northeasternballet.org
(603) 834-8834

3rd Annual Spring Craft Show

Save the Date !

The third annual Spring Craft Show at the home of Bobbie Stave, 40 Orchard Rd. Wolfeboro will take place on Sat. May 5, and Sunday, May 6 from 10am to 3pm. Artists showing this year will be Gogi Milner: Cornish Hill Pottery, Di Simpson: handcrafted cards, The First Congregational Ghana Outreach Batik Boutique, and Leslie Meserve: Mirror Lake Soap Co.; this list is not complete! Bobbie and Patsy Meisner will be showing new works in repurposed silverware as well as gemstones, crystals, and sterling silver. *Plan on stopping by to see what's new!*

CALLING ALL ARTISTS Exhibit & Sell Your Work...

from Debbie Hopkins

Opportunities for GWAC members to show their work abound! We need artists' work to hang for the months of May - June; July - August; September - October. These shows at Meredith Village Savings Bank and Huggins Hospital can be one or two artists sharing space. If no one comes forward, it will be group shows for all members to bring one piece. One suggestion would be for one of the art groups to do a group show... please call to get on the calendar, Debbie Hopkins 603-569-4994 or Marty Koons 603-515-0072.

GWAC MEMBER NEWS

from Jeannette D'Onofrio

In this our 50th Anniversary year, we are opening our Membership to local cultural organizations who wish to join us, not only for the advantages of advertising directly to our members, but because we become a vibrant and powerful arts & cultural organization when joining together. Please note the enclosed MEMBERSHIP FORM for 2018-19 on page 6. Individuals will still remain at the \$25 level, but groups, businesses and organizations will be able to join us at the \$40 level.

NOMINATIONS-GWAC Board

Vice President Elizabeth Helfer may be reaching out to you to fill one of the vacant seats on the GWAC Board this spring. Along with a little help from Jeannette D'Onofrio and Jerome Holden, we are hoping to have this milestone year (our 50th Anniv.) turn a corner with fresh ideas, new energy and enthusiasm. Our summer newsletter will welcome the new slate of officers for the next 2 years.

A CALL TO ALL ARTISTS DONATE YOUR ARTWORK

from Polly Cain

Barbara Gibbs, owner of the ART PLACE, downtown Main St. Wolfeboro, is generously creating space in her gallery/shop to permit GWAC artists to exhibit their donated art work from Saturday, April 28 ending on Saturday, May 26, 2018.

The objective is to raise funds for continued support of the GWAC Annual Visual Arts Award presented to a future art major from the Kingswood Regional High School/Tech Center who has been accepted to a degree granting, accredited art school/program. This year the Council is awarding \$500. In the past GWAC has honored a student with an art book or \$250. The board wishes to increase the award to \$500 annually.

The bidding on your donated art pieces will begin on Saturday, April 28th and will continue through the month of May, ending on ART WALK night, May, 26th from 5 - 7:30 pm. The winning bids will be announced at the ART PLACE at 7pm, Saturday, May 26th, during the ART WALK festivities. A festive evening is planned with refreshments and music.

Here is what we request. PLEASE DONATE a small painting preferably in a small frame (hopefully no bigger than an 11x14 painting). Space will be limited so think small! Call or email, Polly Cain, 603-569-1190 or pollywerks@aol.com to donate your piece. You will be sent the necessary form containing the value and starting bid of your work and a Title tag. Please deliver your painting with your forms to Polly Cain, 6 Hickory Road, Wolfeboro (Wolfeboro Common II) **DEADLINE TO RECEIVE all artwork is MONDAY, APRIL 23RD WITH ABSOLUTE DEADLINE ON WEDNESDAY, APRIL 25TH.** All artwork will be hung on Friday, April 27th and 28th. Tell all your friends to drop by the ART PLACE during the month of May.

Your generous donation of art work will be welcomed. Many Thanks to Barbara Gibbs for Supporting GWAC and our Community.

Thanks,
Polly Cain, Co- President



Wright Museum of World War II *Opens for its 24th Season*

From **May 1 to June 17**, 2018, the Wright Museum will feature two exceptional photography and painting exhibitions in addition to our great permanent collection.

The first exhibit is, **"Memories of World War II: Photographs from the Associated Press Archives."**

This exhibit includes 60 of some of the most iconic black and white photographs taken during the war.

The second exhibit is, **"Private Charles J. Miller, South Pacific, 1942-1944"**. This show features 40 works selected from the more than 500 paintings that Miller did while serving in the South Pacific during WWII. Not seen for 70 years, these dramatic watercolor paintings are "national treasures".



These extraordinary exhibits are a must-see for American history buffs, photographers and painters; both offering powerful visual complements to what you may have seen, read and heard about WWII.

The Wright Museum of WWII is open annually May 1 – October 31.

We are located at 77 Center St in Wolfeboro, NH.

For further information – 603-569-1212 or www.wrightmuseum.org

Shadows & Light Tour 2018

Looking at opposing values in a new light...or shadow

Peter Abate
Darlene Bean
Bob Bond
Peggy Brewster
Steve Brown
Valerie Shurer Christle
Mabel Doyle
Ken Eason
Bob Farrell
Ron Fountain
JP Goodwin
Joe Keller
Elaine Klement
Gary LaPierre
Heather MacLeod
Emily Marsh
Anita Muike
Mikel O'Brien
Shawn Pelech
Jeff Roberts
Norman Royle
Gabe Smith
Sharon Theiling
Jill Vendituoli
Lukas K. Weber
Corina Willette

March 1 – March 31

Reception March 17th 2018 from 10am to 12:30pm



For more info:
Call The Gafney Library at 603-522-3401

Gafney Library 14 High St, PO Box 517, Sanbornville, NH 03872

Judi Lemaire presents her custom batik painted eggs at the Meredith League of NH Craftsmen Gallery. The eggs are for sale at the League of NH Craftsmen galleries year round in Meredith, Hanover, Littleton, Concord and seasonally in Center Sandwich and Hookset. The stores are open from 10am-5pm, and Sundays 12:00-5pm.



Do you have art news coming up this summer and want your fellow members to know about it? well then... tell Jeannette about it via email

j@virgodesignstudio.com

and she will be sure to get it in the next issue

DEADLINE June 1, 2017

MEMBERSHIP FORM 2018-19




2018-19 MEMBERSHIP FORM

At this time, we are asking for your continued support for the 2018-19 fiscal year as a MEMBER of The Governor Wentworth Arts Council. GWAC is a non-profit, volunteer arts organization whose purpose is to enrich the cultural environment in the community, to stimulate interest in the arts and to assist local artists and craftspeople.

Membership fees, donations and proceeds from activities fund arts programs in the district schools and libraries, as well as special events and grants to cultural non-profit arts organizations within our community.

Benefits of GWAC membership entitles you to receive monthly notices as e-ART Clips via email, the quarterly e-newsletter, providing members and arts supporters with current art events and information. Your name will also be added to the mailing list for special GWAC arts gatherings, workshops and seasonal activities.

The individual membership fee is **\$25** for the year. Businesses/Organizations may join at the **\$40** level. **Please make your check payable to: "GWAC" and return it with the cut off form below by June 2018.** You can download additional membership forms and event applications on our site: www.wolfboroarts.org. Also find us on:  Additional donations are very much appreciated at this time. Join us in supporting local arts!

GWAC is a 501(c)3 nonprofit educational arts organization. Your donation is tax deductible to the extent permitted by law.

Sincerely,

Jeannette D'Onofrio (*Membership Chair*)

----- (cut here) -----

2018-19 GOVERNOR WENTWORTH ARTS COUNCIL MEMBERSHIP FORM

(please print)

Name _____

Mailing Address _____

Phone _____ Email _____

(NOTE: Your email address is essential for direct mailings and the newsletter, do not omit.)

_____ Enclosed \$25 Annual Individual Membership Fee

_____ Enclosed \$40 Business/Organization Membership Fee

Additional Donations welcome (\$10 / \$25 / \$50 / \$100 / \$ other _____) **THANK YOU!**

Please make your check payable to: **GWAC**

Mail to: **GWAC Membership c/o Jeannette D'Onofrio 17 Grove St. Wolfeboro, NH 03894**

Please contact me - I would be willing to help with:

_____ Set-up/down at a GWAC sponsored special event



Museum of Fine Arts, Boston

M. C. Escher: Infinite Dimensions

February 3, 2018 – May 28, 2018

Puzzle the eye and delight the mind

From dorm-room posters to book jackets, the perspectival puzzles and interlocking forms of M. C. Escher (1898–1972) have teased and delighted millions of people around the world. The MFA presents the first exhibition of original prints by the Dutch artist in Boston, bringing together 50 works from public and private collections that highlight his rich imagination and mesmerizing technical ability.

"Infinite Dimensions" investigates some of the themes that define his work, including tessellations (arrangements of repeated shapes that fit together with no gaps), perspective and perception conundrums, sphere and water reflections, and transformations. Among the highlights is the 13-foot-long *Metamorphosis II* (1939-40), a monumental exploration of the fluidity of time and space in which a chessboard, hive of bees, rustic village, and other elements merge into a continuous woodcut printed from 20 blocks.

Escher's prints are at once serious and playful, drawing on mathematical principles to construct illogical spaces that puzzle the eye and delight the mind. To illustrate the far-reaching relevance of Escher's creative vision, the MFA has invited individuals from a variety of creative professions—including cellist Yo-Yo Ma and poet and critic Lloyd Schwartz—to choose and write about a print in the exhibition. "Escher's [work] is like seeing the Earth from space," writes astronaut and artist Nicole Stott, "encouraging us to understand the harmony and complexity of our home from a completely new vantage point."

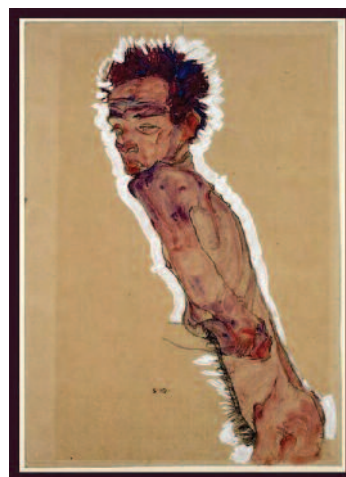


KLIMT AND SCHIELE: DRAWN

Boston Museum of Fine Arts, Boston MA

Just opened! On through May 28, 2018

Gustav Klimt and Egon Schiele were among the most daring and controversial artists in Vienna during the culturally turbulent decades around the turn of the twentieth century. They worked out their provocative depictions of the human body, created in a search for psychological truth as well as physical realism, in the direct and intimate medium of drawing. In Klimt's studies, the distinctive character or unsettling emotional resonance of the person portrayed comes through in the artist's delicate, sinuous lines. The striking presence of the individual in Schiele's more finished drawings, often rendered with extreme frankness and bold coloration, pulses with dramatic immediacy. Although Klimt was almost thirty years Schiele's senior, he quickly recognized and encouraged the younger artist's extraordinary talent, and they remained mutually admiring colleagues until the shared year of their deaths, in 1918. The sixty important drawings exquisitely reproduced in this volume reach from each artist's early academic studies to more incisive and unconventional explorations of nature, psychology, sexuality, and spirituality that led to controversy in their lifetimes and remain striking and unsettling today. This album of unforgettable drawings from the Albertina Museum, Vienna, provides a direct connection to the minds of two master draftsmen exploring the limits of representation.



CURRIER
MUSEUM
of ART

MANCHESTER, NH

ART CENTER

The Zimmerman House was designed by the acclaimed American architect

Frank Lloyd Wright in 1950. It is the only Wright-designed building in New England that is open to the public.

The Zimmerman House Public Tour provides guests with a 90-minute exploration of the House with information about the architecture of Frank Lloyd Wright, the commission and design of the House, and details about the Zimmermans who lived there for 36 years.



Due to the intimate nature of this home and its setting in a residential neighborhood, access to the house and its grounds is available by guided tour only. Reservations are required for all tours, and we recommend purchasing tickets well in advance. Tour tickets are non-transferable and non-refundable. All Zimmerman House tours begin at the Currier Museum of Art and guests are transported to and from the house by van. Restrooms are available at the Museum, but there are no restrooms available at the Zimmerman House during the 90-minute tour. Comfortable shoes, particularly flats for women, are recommended. Children under the age of 7 are not permitted. Photography is only allowed of the exterior of the Zimmerman House.

All Zimmerman House tours include general Museum admission; some special exhibitions may require an additional fee.

Happy



Spring

GWAC Members
Want to have your work displayed here this summer...
email Jeannette: j@virgodesignstudio.com
and send her your high resolution images with all the details.