

Governor Wentworth Arts Council

SPRING 2015

wolfeboroarts.org

Presidents' Note 2

GWAC Newsbites 4

Member Arts Events 5

GWAC News 6

regional Exhibits & Museum Shows 7

Next GWAC Mtg. 8

front & back cover artwork
by Valerie Shurer Christle

A quarterly publication for members and arts supporters



Presidents' Note

Hello Everyone!

I think it's safe to say (fingers crossed) that spring is definitely around the corner ...

With that in mind, I should like to remind you of some up and coming events this spring as we awake from our winter slumber! While you were sleeping, various committees have been active working to bring you ...

TABLESCAPES: our newest fun'raiser which will be in April. The Gala event is scheduled at the Wolfeboro Inn on Thursday April 16, 2015 at 7pm. This is a "By Invitation Only" event and you should be receiving your invitation in the mail very shortly. There will also be tours of Tablescapes on Fri. 17, Sat. 18 and Sun. 19 of April - 10am to 3pm. The cost is \$5 per person. The monies raised will benefit arts programming in the community - help us keep art alive. Contact Jeannette D'Onofrio for more information. Hope to see you there!

The ART WALK resumes on Friday April 24, 2015 - look out for monthly e-Clips notices calling for your artwork to sell.

Polly Cain continues to do a splendid job co-ordinating the members' art at Huggins Hospital and Meredith Village Savings Bank - she is always interested in new pieces for both locations. If you have a 3D piece which is able to be hung - don't be shy, give Polly a call! Suzette Winchester is happy to announce she is taking bookings for 2017 at the Wolfeboro Public Library - way to go Suzette!

To add to the GWAC events list, there is a member social Pot-Luck Dinner & White Elephant Art Supply Sale to be held at the William Lawrence Camp in Tuftonboro on Thursday, May 21, 2015. Nancy Piper and Polly Cain is helping to coordinate that event.

As always there are on-going committees for other activities including a new venture: Wolfeboro Cultural Collaborative which is a group of non-profit arts & culture organizations in the area working together. Jeannette D'Onofrio is GWAC's representative on this committee - thank you Jeannette for the time you spend on this on GWAC's behalf. PAINT Wolfeboro has now been moved to August this year to see if we can enjoy more favorable painting weather and the Priscilla Hodges Workshop will be in September (headed up by renowned pastel artist, Robert Carsten).

If anyone out there is interested in forming a committee for the Festival of Trees 2015 feel free to contact a Board member for more details.

Last and definitely not least, check out our website - Jeannette D'Onofrio and Jerome Holden with the help of Rich Masse, have been busy updating our site - a huge thank you and don't forget we look forward to receiving your updated works so we can keep GWAC looking fresh!

Watch your e-clips for more information!
So, let's stop doing the "snow dance" and bring on the spring flowers!

Barbara Gray
President 2015



printing provided by:

Jim Graves
Lilac Printing
189 Wakefield St.
Rochester, NH 03867
603-332-0511 lilacprinting.com

OFFICERS 2015

President
Barbara Gray

Vice President
Jerome Holden

Secretaries
Judi Lemaire & Polly Cain

Treasurer Liason
Nancy Piper

COMMITTEES

Membership & Marketing
Jeannette D'Onofrio

PAINT Wolfeboro
Madelyn Albee & Debbie Hopkins

Priscilla Hodges Scholarship
Nancy Piper
Andrea Dudley
Treasurer: Suzette Winchester

GWAC ART-Displays
Polly Cain

ART WALK
Jeannette D'Onofrio &
Jerome Holden

Art in the Library
Suzette Winchester

**Grants to
Schools & Libraries**
Nancy Piper

TABLESCAPES
Jeannette D'Onofrio

Newsletter/e-ART Clips

Jeannette D'Onofrio

Email Art News to:

j@virgodesignstudio.com

(Summer Deadline: June 1, 2015)



Governor-Wentworth-Arts-
Council/297525400332433

Editorial Credits
Barbara Gray, Polly Cain,
Debbie Hopkins
Jeannette D'Onofrio

Photo Credits
Valerie Shurer Christle,
Nancy Piper, Debbie Hopkins
Jeannette D'Onofrio

GWAC Newsbites

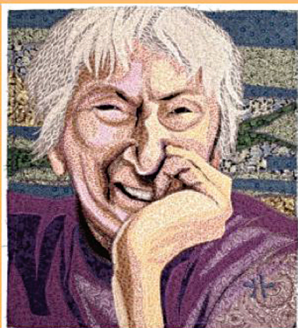
Arts on the Edge Wolfeboro
presents

The Art of Last Things:

Conversations and Resources for

Living and Dying Well

First Congregational Church Wolfeboro
115 S. Main Street, Wolfeboro, NH



TRANSCENDING by Deidre Scherer

Deidre Scherer

internationally known fiber artist

Exhibit:

May 1 - June 16, 2015

keynote talk with artist

June 16 at 7pm



OPEN WINDOW by Deidre Scherer

Presentations

(with discussion)

Tuesdays 4-6pm

*May 12 & 19 - Legal and Financial Planning
(Susan John, Certified Financial Planner and
Margaret Demos, Attorney)

*May 26 - Funeral Planning (Brian Lord,
Funeral Director)

*June 2 - Advanced Care Planning
(Jennifer Laramie, Hospice Director and
Liz Testa, Social Worker)

*June 9 - Grief and Bereavement Resources
(James Miller, Bereavement Coordinator)

All events are free - Donations are welcome

Sponsored in part by New Hampshire Humanities Council
and Central New Hampshire VNA and Hospice

For more information please visit www.fccwolfeboro.org
or call (603) 569-1555

Arts on the Edge Wolfeboro is a program of First Congregational Church, Wolfeboro, UCC



from Debbie Hopkins

At the wrap-up meeting of "PAINT Wolfeboro" it was decided to move this event into August, instead of dealing with the winds of September! Madelyn Albee and Debbie Hopkins, co-chairs of this event will go before the Selectmen to ask permission to put "PAINT Wolfeboro" on the town calendar for Wednesday, August 19th (rain date Aug 20th). Artists participating, please save two paintings to display for this event. For more details contact Debbie 569-4994.

PAINT
Wolfeboro



Are you interested in taking an art workshop or course? Don't miss an opportunity to apply for a Priscilla Hodges Scholarship!

Any adult living in the Lakes Region is eligible to apply. Application forms are available at The Art Place, Blue Shutter Gallery, Sandy Martin's Gallery in Wolfeboro or on line: www.wolfeboroarts.org

If you have any questions, call either
Nancy Piper 569-2762
or Andrea Dudley 569-8246

GWAC MEMBERS' SHOWS

Three GWAC members have shows that can be viewed till mid-April. Madelyn Albee's watercolors and oils work is at the Meredith Village Savings Bank downtown Wolfeboro. Her work shows a versatility with abstract as well as control and detail of her subject matter. Inspiration is drawn from nature with a flowing brush.

At Huggins Hospital, Cate Poole, watercolorist has interpreted the seasons and moods of the big lake in an illustrative style. Ken Alger completes the show with his digital photos. They capture typical Maine scenes such as "Nubble Lighthouse" and Misty Fjord, Alaska.

The winter exhibit will be removed from these venues the end of April and then we will have exhibits in May - June, July - August, and September through the end of October. If anyone wishes to have their own exhibit or to have a friend exhibit with you, please call Polly at 569-1190 or pollywerks@aol.com. All works are for sale.

ART AT THE WOLFEBORO LIBRARY

March	Youth Art Month
April	Robert DeMario (cut paper collage and sculpture)
May	Marth Webster (acrylics)
June	Pam Grady (pastels, pencil, watercolor and charcoal)

For details about how you can exhibit your work, contact Suzette Winchester, 569-3372.

SUMMER NEWSLETTER DEADLINE

Be sure to get your summer arts events emailed in by **June 1st** (covers June/July/Aug) to be sure it is seen by all GWAC members. Remit to: j@virgodesignstudio.com

Member Arts Events




Heifetz On Tour

Friends of Music is proud to present back to Wolfeboro students from the prestigious Heifetz International Music Institute

Saturday, April 11, 2015 7:30pm

Anderson Hall, Brewster Academy, 205 S. Main St. Wolfeboro

Tickets \$20 are available at: Avery Insurance, Black's & Innisfree Bookshop (Meredith) and at the door
Call 569-2151 or online at WFriendsofMusic.org

SPRING  2015

THE AGATHA CHRISTIE'S MOUSETRAP

SUSPECT EVERYONE

"Mousetrap, The" is presented by special arrangement with SAMUAL FRENCH INC.



APRIL 10 & 11
17 & 18
8:00pm

APRIL 19
2:00pm

51 Glendon St. Wolfeboro, NH

TICKETS \$12
at Black's Paper & Gifts
or www.village-players.com

DIRECTED BY
Cate Poole
ASSISTED BY
Jay Sydow
PRODUCED BY
Joshua Spaulding

thank you sponsors
 

4

\$5.00
ALL CHILDREN MUST
BE ACCOMPANIED
BY AN ADULT
CHILDREN UNDER
AGE 8 - FREE

TOUR DATES
APRIL
17 / 18 / 19
FRI / SAT / SUN
10AM - 3PM
AT
THE WOLFEBORO INN
90 NORTH MAIN ST. WOLFEBORO, NH

CREATIVE TABLESCAPES SETTINGS

**VIEW CREATIVE TABLE TOP
DISPLAYS BY
ARTISTS, ORGANIZATIONS
AND BUSINESSES**

**FUNDS SUPPORT
THE ARTS LOCALLY
IN THE SCHOOLS,
LIBRARIES AND
ARTS ORGANIZATIONS
THROUGH THE**


**THANK YOU TO
OUR SPONSORS**








**WATCH LIVE
ART
DEMONSTRATIONS**
hosted by
The Governor Wentworth Arts Council
a 501(c)(3) non-profit
educational arts organization
wolfeboroarts.org

First Annual TABLESCAPES

A huge THANK YOU, to the team who helped produce this first annual event: Barbara Gray, Judi Lemaire, Polly Cain and Jerome Holden. Thank you also to the many GWAC volunteers who have manned the registration tour table, and came to be on site during the set-up and take-down days during the entire week.

Thank you also to the artists who have graciously volunteered to demonstrate during the tour dates as follows:

Friday - April 17

10am to 1pm - Becky Bense / watercolorist
1pm to 3pm - Peter Ferber / watercolor & oils

Saturday - April 18

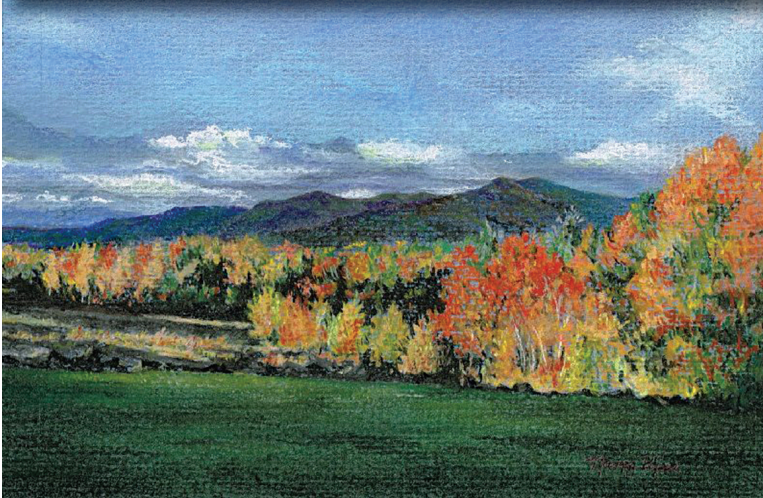
10am to 1pm - Judi Lemaire / Batik egg decorating
1pm to 3pm - Robin Cornwell / fiber art & floor cloths

Sunday - April 19

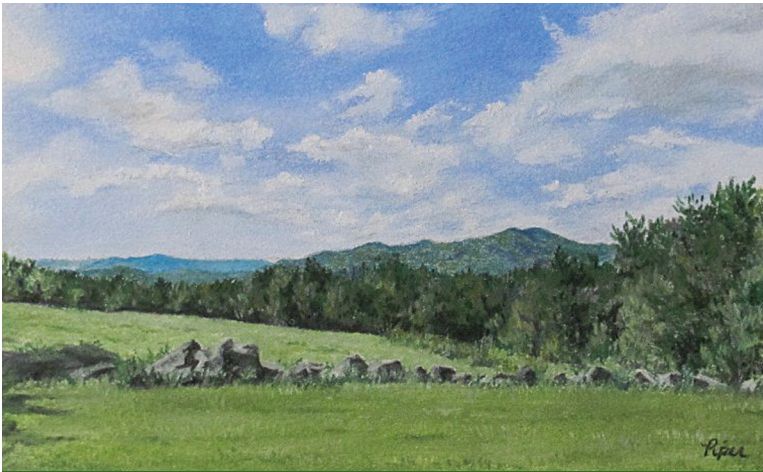
10am to 1pm - Mary Connolly / bead art & jewelry maker
1pm to 3pm - Brian Stockman / wood carving

We hope you will all visit and see the gorgeous creations of some of the most talented folks in the area!

GWAC News



(above) Mt. Shaw - Fall - by Nancy Piper and
(below) Mt. Shaw - Summer



Membership Renewal for 2015-16 not till July

How do YOU benefit from GWAC Membership?

As an annual dues-paying member of the Governor Wentworth Arts Council, you can:

- attend the monthly meetings
- receiving the quarterly e-newsletter
- advertise your art business, event or news
- receive monthly e-mail updates (e-ART-Clips news briefs)
- have advance notice of arts events and activities
- the opportunity for artist members to feature samples of their work on the group's web site and to participate in area exhibits and sales
- the knowledge that you're supporting the growth of the arts in the community and the schools.

Current members will receive a form in their postal mail by the end of June. (GWAC fiscal year begins July 2015).

Can't wait till June? Contact the Membership Chair, **Jeannette D'Onofrio at 569-0078** or email: **j@virgodesignstudio.com** and a form can be sent to you via email. Annual dues is still only **\$25** payable to GWAC. Mail your dues and contact info to: **GWAC Membership, 17 Grove Street, Wolfeboro, NH 03894.**

Member POT-LUCK SOCIAL & PURPLE ELEPHANT SALE

MARK YOUR CALENDAR...On **Thursday, May 21st at 5:00pm** Nancy Piper has arranged for all members to have a fun Pot Luck Dinner and Recycle/ Resale at the William Lawrence Camp in Center Tuftonboro (off Rte 109A, right off Federal Corner Rd).

This is our chance to clean out our closets, art studios, basement etc. and rid ourselves of anything related to the arts, such as old magazines, books, fabrics, easels, art paper, frames, and art/photography equipment. If your item(s) are too big to bring to this event, take a photo to bring. We will provide a recycling table (giveaways) and an elephant table where you will have the opportunity to sell your items, 20% of the sale will be donated to GWAC. It should be a fun evening for all !

More details about this event will follow in April's e-clips newsbriefs, so watch your email.

Hope to see you there!

Polly Cain,
Exhibit Coordinator

GWAC Board Seats 2015-16 CALLING FOR NOMINATIONS

from Jeannette D'Onofrio

According to the GWAC bylaws, the nomination is held at our May meeting and voting takes place in June and officers take over July 1 - the start of our fiscal year.

We would like to have a Nominating Committee formed (volunteers) at our April meeting and a slate of officers be presented at the May meeting and officially voted in at the June meeting.

We will discuss at our April meeting who would like to stay in their seats into the coming year and which would be open. Many of the committee chairs have agreed to stay at their posts to date.

Consider becoming a vital part of the GWAC board and help to continue to support the growth of the arts in our community. Please contact Barbara Gray for more details.... 715-7009.

GWAC ART WALK

This self-guided tour of galleries and arts locations stretches from one end of Main Street (Rt. 28) to the other and includes the following: The Studio Gallery, The Kalled Gallery, The Art Place, Artisans Corner, Sandy Martin's Gallery, the Connelly Gallery as well as the Northeastern Ballet Studio and Winnepesaukee Chocolates. GWAC artists can sell/display their work as a group downtown at Durgin Green during the nice weather and will be in the great hall at The Wolfeboro Inn on inclement weather. Pick up a free promotional Rack Card available in April at each gallery and select retail locations in Wolfeboro which lists all the participants, contact info. with a map.

Each ART WALK location will open their doors for the extended hours of 5pm to 8pm on the following dates: April 24, May, 29, June 26, July 31, Aug. 28, Sept. 25, Oct. 30, Nov. 27 and Dec. 18. The galleries may feature new artists exhibits, sales, nibbles or live musical entertainment. It is up to the discretion of the gallery owner to present their space for the ART WALK in any way they decide - it will vary and change each month. Keep your eye on the local papers, the GWAC Facebook page and website for details. The Northeastern Ballet Theatre will allow patrons to view a class, or impromptu ballet performance.

SPECIAL DATE - June 26th - will include the Wolfeboro Cultural Collaborative. Museums will offer the entire day with FREE Admission, special discounts on music, and dance performances will be happening throughout town and you are all invited!

See special e-clips newsbriefs coming with details.

NOTE: GWAC members, take full advantage of displaying and selling your professionally presented works beginning in May. Jerome Holden will be in charge of setting up and taking down the artwork each of the Friday evenings. Contact Jerome at 569-5335 or Jeannette 569-0078. Individual GWAC members do need to fill out the Sales Agreement and participation forms prior to the event date. Artwork must be framed, mounted, titled and priced for sale.

It is our hope that the result will yield walking traffic to downtown Wolfeboro experiencing the cultural aspects of the town. This will help promote individual artists, potential customers for galleries, economic growth and contribute to the artistic vibrancy of the community.

For more details and questions about this ART WALK, please contact either of the co-chairs; Jeannette D'Onofrio 569-0078 or j@virgodesignstudio.com, or Jerome Holden 569-5335, signguy@jcsigns.com.



A self guided tour of galleries and
arts locations in Wolfeboro, NH
the last Fridays of each month

5pm to 8pm

April 24 / May 29 / June 26 / July 31 / Aug. 28

Sept. 25 / Oct. 30 / Nov. 27 / Dec. 18

hosted by

**Governor
Wentworth
Arts Council**

wolfeboroarts.org





**Museum of Fine Arts
Boston**

Avenue of the Arts
465 Huntington Avenue Boston, MA 02115
www.mfa.org
Adult, Youth, School, & Group Visits: 617-369-3310;
groups@mfa.org
HOURS: The MFA is open 7 days a week.

Leonardo da Vinci and the Idea of Beauty

April 15, 2015 – June 14, 2015

Lois B. and Michael K. Torf Gallery (Gallery 184)



Another genius comes to the MFA in April!

In an intimate exhibition featuring master drawings by Leonardo da Vinci and Michelangelo, the star is a study of an angel that the art historian Sir Kenneth Clark called “the most beautiful...in the world.” Leonardo da Vinci’s accomplishments in art and science find their common ground in his drawings, into which he poured the full fervor of his intelligence and creative powers. Throughout his career, Leonardo experimented with various types of drawings: scientific studies; grotesque caricatures of craggy faces; and the most beautiful faces of men and women that he could imagine. Many of Leonardo’s most admired drawings are featured in this rich and varied selection of 29 sheets and a manuscript, opening on April 15, fittingly Leonardo’s birthday.

One revelation for visitors will be the rarely displayed Codex on Flight, one of Leonardo’s most perceptive scientific explorations, with its nearly hidden self-portrait of Leonardo as a young man, a recent discovery. The exhibition features rare loans from a number of Italian public collections, including the Uffizi Museum in Florence, the Biblioteca Reale in Turin, and the Casa Buonarroti, the ancestral property of Michelangelo in Florence, which has lent eight drawings by that master.

Above: Leonardo da Vinci, Head of a Young Woman (Study for the Angel in the 'Virgin of the Rocks'), about 1483–85. Metalpoint on paper. Biblioteca Reale, Turin. Italy/Alinari/The Bridgeman Library.

**CURRIER
MUSEUM
of ART**

150 Ash Street
Manchester, NH 03104
603.669.6144
www.currier.org

Painterly to Precise: Richard Estes at the Currier

Feb. 14, 2015 — June 15, 2015



Two new acquisitions provide the heart of a focus exhibition of works by one of America’s best-known photorealist painters, Richard Estes (born 1932). Painterly to Precise: Richard Estes at the Currier, on view from February 14 through June 15, 2015, complements the current exhibition Still Life: 1970s Photorealism. His work was recently featured in a popular and critically lauded career retrospective at the Smithsonian American Art Museum in Washington, D.C. and the Portland Museum of Art in Maine, Richard Estes’ Realism. NPR’s Susan Stamberg called Estes, “An intense observer of the built environment.” He currently lives in coastal Maine and New York City, two of his most often painted locales.

Image credit: Richard Estes, Baby Doll Lounge, 1978, oil on canvas. Currier Museum of Art, Manchester, New Hampshire. Museum Purchase: The Henry Melville Fuller Acquisition Fund, 2014.48. © Richard Estes, courtesy Marlborough Gallery, New York.

MUSEUM PASSES

Did you know that the local Wolfeboro Library has museum passes for the MFA, Currier Museum, and many of our local museums? Ask for details at the Library front desk.

The background of the entire flyer is a collage of various flowers, including large yellow ranunculus, pink peonies, and purple hydrangeas, resting on a bed of newspaper clippings. The text is overlaid on a white rectangular area in the upper left.

Governor Wentworth Arts Council

P.O. Box 1578 Wolfeboro, NH 03894

All members & guests
WELCOME
to the next GWAC meeting:

**Thursday, April 2, 2015
7:00pm**

at the
**Village Players Theater
51 Glendon St. Wolfeboro**

"SHOW & TELL"

You are invited to bring
a piece of artwork you created
during the winter months.

This will be shared
following the general
business meeting.

Please contact Barbara Gray
lovetoharp@aim.com or 715-7009
for meeting details.

Light refreshments served.