

**Governor Wentworth
ARTS Council
PO Box 1578
Wolfeboro, NH
03894**



WINTER 2018-19

wolfeboroarts.org

A quarterly publication for members and arts supporters

**2
Message from
the President**

**3
Member News**

**4
GWAC News to Note**

**5
TABLESCAPES form
(front)**

**6
TABLESCAPES form
(back)**

**7
regional Exhibits
& Museum Shows**

**8
"Making Jack"**



MESSAGE from the President

Welcome Winter!

Yes... I did say "Welcome Winter". For all of you who ski, snow shoe, cross country and ice skate, this time of year can be lots of fun. Not really interested in winter activities?.... visit a regional museum or better yet - dream up your creative table display for TABLESCAPES.

Preliminary planning for the spring Tablescapes 2019 are underway. We have wonderful sponsors and a handful of tables have been reserved, more are needed however to fill the new location in the Barn at the Inn on Main. Please sign up soon (deadline is January 2019) if you are interested in participating with a table display. For more details see the article on pages 5 & 6.

I am happy to report that the bylaw changes the board recommended were voted in at the Annual Fall gathering Oct. 27, 2018. Also, the new fiscal year will begin in Jan 2020 after a short fiscal year from July 2019 to Dec 2019. Our fiscal year from this point on will follow suit with the traditional year from Jan to Dec as in the majority of fiscal periods rather than following the school calendar fiscal year.

Proceeds from our Art Education Fund, chaired by Elizabeth Helfer, has been given to three recipients this year (see more in this newsletter). We are thrilled that our arts community is able to utilize this fund and help support their endeavors.

The board has taken up the challenge of creating a themed tree for Festival of Trees this year (see photos on page 8) The event marked the 20th annual at the Wright Museum with proceeds donated to local charities in our community.

If you have a creative event in mind that you are interested in chairing we would love to hear about it. Just come up with an outline and a budget (we have a new event form which makes it simple) and submit the proposal to the board.

Happy Winter !

Jerome Holden,

President 2018-19

OFFICERS 2018-2019

President

Jerome Holden

Vice President

Emily Marsh

Secretary

Judi Lemaire

Treasurer

Lorrie Drake

COMMITTEES

Membership & Marketing

Jeannette D'Onofrio

PAINT Wolfeboro

Madelyn Albee

Priscilla Hodges Scholarship

Linda MacDonald

GWAC ART-Displays

Debbie Hopkins & Martha Koons

Grants to Libraries & Art Education Fund

Elizabeth Helfer

TABLESCAPES

Jeannette D'Onofrio

Newsletter/eART Clips

Jeannette D'Onofrio

Email Art News to:

j@virgodesignstudio.com

(Spring Deadline: March 1, 2019)



Editorial Credits

Jerome Holden,
Debbie Hopkins, Emily Marsh,
Elizabeth Helfer, Friends of Music,
Jeannette D'Onofrio

Photo Credits

Emily Marsh, Robin Cornwell,
Friends of Music,
Jeannette D'Onofrio

Sponsored in part by

Ashton & Company, PA
Certified Public Accountant



printing provided by:

Lilac Printing
189 Wakefield St.
Rochester, NH 03867
603-332-0511 lilacprinting.com

CALLING GWAC ARTISTS Exhibit & Sell Your 2D Work...

from Debbie Hopkins

Polly Cain is our solo artist at Huggins Hospital. The show will be up all winter, coming down by the end of April. As most of you know Polly is a retired nurse, who put her artistic talents aside to pursue a nursing career. Now in retirement, she sets aside time to do acrylics. Her work includes still life, flowers, and nature's seasons. The show was hung the first of November and she has just sold two paintings!!

The Meredith Village Savings Bank show hosts GWAC member's work and will also be up over the winter months. Members participating are: Marilyn Bodwell, Jerri von Stein, Madelyn Albee, Carol Thomson, Kristina Sakai, Marilyn Zimmerman, Randy Zimmerman, Marty Koons, Pam Grady, Ilona Train, Betty Kanca, Ann Tracy, and Ruth Willet. This mixed media show is for the most part, landscapes. If your winter scene becomes "old", stop in and enjoy a different season.

Our goal is to host one "new member" art show in the coming 2019 season, step right up if that applies to you. OR, if any of our current members know of a new member who truly needs to show their work - please call us: Debbie Hopkins 569-4994 or Marty Koons 515-0072.

***Our best holiday wishes to all
and please keep painting!***

New Job for VP Emily Marsh...

GWAC Vice President, Emily Marsh (left), and Angie Lane, Executive Director of Red River Theatres, are photographed at the sold-out premiere screening of the critically-acclaimed film "The Divide" in Concord, NH. Emily is the new Events and Marketing manager at Red River Theatres, and organized this event, which was attended by the writer, director, and lead actors of the film. Emily also manages the non-profit's marketing strategies and collaborates with other organizations to bring film to the Concord community.



NEWS FROM ELIZABETH HELFER - Past VP of the Arts Council...

Hi! It's been a tremendous year of change and it seems like time to fill you in.

Way back in February I got to fly out to NZ to see my sister. To say it was inspirational is an understatement. We got to play and camp and drink great wine; the rugged young country around Queenstown is aptly known as the adrenaline capital of the world! Just following, I took on a young designer, Hunter Scanlon, as my studio assistant. He helped me fast-track some cast iron projects and has been an amazing contributor for the past ten months.

In April, I participated in the 4th annual Tablescapes fundraiser for the Governor Wentworth Arts Council. Over the summer, I continued my role as Grants Coordinator for GWAC to facilitate the new Art Education Fund.

In May I traveled to Scranton, PA with fellow sculptor Rook Hyde for the International Conference on Contemporary Cast Iron Art. Rook assisted with *The Grind: Networking for Iron Casters* event which brought 25 organizations and MFA programs together to share their resources with conference attendees. It was great fun with great food, and the conference boasted some wonderful exhibitions.

In October, I was excited to contribute new sculptures to two exhibitions: *Sculpture Rules!* by NESAs at the Imago Foundation in Warren, RI, and *Feminism Prism* at the Spaceus Annex in Cambridge, MA. I joined the Spaceus group in Harvard Square in September which provides a unique platform for artistic networking and collaboration. It's been a pleasure to sell small artwork in their gallery space and host a PechaKucha night. I am happy to report that I will be taking on a more involved role with the New England Sculptors Association (NESA) as interim Secretary.

After nearly four years in my Cambridge, MA, studio, I've vacated to a new location: our new house! We recently moved into the former home of painter Suzanne Hodes and I have transformed her painting studio into my new sculpture workshop.

Upcoming, I will be hosting three events by Lifetime Guarantee, a collaboration between artists Kristen Tordella-Williams and Jenny Hillenbrand, for their participatory performance *The Harder Barter Market*. If you have never experienced their performance, I cannot recommend it highly enough. You will have two chances to join in: -Wednesday, December 12th @ The Mosesian Center for the Arts, Watertown, MA -Thursday, December 13th @ Hatch Makerspace and Room 83 Spring, Watertown, MA.

I hope you are having a warm and restful holiday season.
All the best,
Liz





Robin Cornwell is the Spotlight Artist in the December/January issue of "Quilting Arts Magazine"

GWAC Artists Display

The months of Dec/Jan/Feb belong to Rebecca Bense, Joyce Pracuta and Jeannette D'Onofrio downtown Wolfeboro at Melanson's window of "The Gun Closet" - all art works for sale! Contact Jerome for details 603-569-5335.



wolfeboro

**friends
of MUSIC**

Sparkling Performances - since 1936

Tickets sold at the door



Hector Olivera *Sun. Jan. 13 - 2:00pm*

*First Congregational Church
115 S. Main St. Wolfeboro*

Maestro Hector Olivera, organist extraordinaire! The man acclaimed in international circles as one who "envision himself as a total orchestra!" Olivera is a passionate, gifted, and unique musician whose personal interpretations of both classical and popular music have amazed and delighted audiences around the world.



Plymouth State University - Chamber *Sun. Feb. 3 - 2:00pm*

*First Congregational Church
115 S. Main St. Wolfeboro*

The PSU Chamber Singers is a select ensemble of talented music students. They perform music of all periods and styles in concerts both on and off campus.

Annual Fall Reception - recap

The Governor Wentworth Arts Council, now in it's 50th year, had their Annual Fall Gathering on Sat, Oct. 27 at the Village Players Theater on Glendon St. Wolfeboro. GWAC members braved the nasty storm to have a social afternoon in a warm and cozy theater. On the agenda were topics to be voted by the group which included; updating the By-Laws, addressing the change of the fiscal year from the current mid-summer renewal to a traditional year-long membership (January to December beginning in 2020), awarding local grants to arts organizations and viewing the 2017 Academy Award nominated fully illustrated art film "Loving Vincent". Our thanks to GWAC member Cate Poole for running the film in the control booth and to the Village Players for providing such a lovely location for our reception.

The group welcomed Edra Toth, founder of the Northeastern Ballet Theatre here in Wolfeboro and Dover studios early in the day. Edra addressed the crowd about how her funding for students works, the large scale productions of the the most recent Legend of Sleepy Hollow and the NUTCRACKER at the Kingswood Art Center on Dec. 2, 2018. She was then presented with a check for \$300 from the Arts Council's Arts Education Fund by President Jerome Holden towards the hire of a master teacher. Edra was previously given a GWAC grant this season to sponsor a student in need for her class.

Another local arts organization, the Kingswood High School Theater, was given a grant of \$400 from the GWAC Arts Education Fund by GWAC President Jerome Holden to recipient Scott Giessler, theater teacher and head of the KRHS Theater. This grant was to help fund materials and costuming for their production of "The Wizard of Oz" Nov 15,16,17 -7pm and Nov 18 -2pm at the Kingswood Arts Center on McManus Dr. Wolfeboro. Scott had a few minutes to speak to the membership about his student's theatrical growth, their theater opportunities and skills learned when producing a performance for the public. Both local arts organizations are just a small sampling of how lucky our community is to have such a vibrant and supportive forum for the arts.





CALL OUT to PARTICIPANTS

5th Annual TABLESCAPES "CREATIVE SETTINGS" Fun'Raiser - April 2019 Elaborate "Creative" Table Top Displays

Final DEADLINE to REGISTER: February 15, 2019 (first come basis)

The Governor Wentworth Arts Council is challenging you to "GET CREATIVE" by producing a wonderful, colorful, and imaginative table-top setting plus win awards for creative recognition.

CRITERIA

Invitation to participate for Non-profits, Designers, Businesses and Artistic Individuals. You must provide all materials to fill and dress a table, of your size/shape choice, plus the dressing for chairs and place settings (optional). Round 72" tables plus chairs are available for use. Centerpieces must add to the theme of your setting. Electric is limited, please be sure you can provide a power source for your display.

Advertising space in the **Event Program Guide** is available for a nominal fee. Email event chair for the details: j@virgodesignstudio.com

THEME

Let your imagination soar! It can be beautiful, edgy, traditional or contemporary. Tables can simulate a time of year, illustrate an idea, story or place and can include florals, graphics, patterns, 3D and 2D elements. Your TABLESCAPE does not have to be professionally produced, however, it should be cleanly and clearly executed for viewers to be enthralled, entertained and amused.

(NOTE: No political or sexual content please. No "real" food permitted.)

WHEN

Set-up is Wednesday, April 3 / 10:00am to 6:00pm & Thursday, April 4 / 10:00am to 3:00pm

Take-down is Sunday April 7 - after 5:00pm til 8:00pm and Monday, April 8 / 10:00am to 6:00pm

People's Choice Award presented Sunday April 7 - 4:30pm.

WHERE

The BARN at The Inn on Main / 200 North Main St. Wolfeboro, NH

WHY

This is a fund raising event for the Governor Wentworth Arts Council a 501(c)(3) educational arts organization.

All proceeds from the ticket and event sales will fund the arts locally in the community.

TOUR

The public may view the completed TABLESCAPES April 5, 6, 7 from 10am to 4pm daily for \$8/pp.

OPENING RECEPTION

One gratis ticket is given to each table participant to attend. Purchase additional tickets \$25/pp.

Opening Reception is Thursday, April 4, 2018 - 7:00pm. Patrons will be able to pre-purchase designated

TABLESCAPE items: includes the dressings, centerpieces & place settings as noted.

Watch as the TABLESCAPE participants win their awards. Listen to live music. Cash bar provided.

Please fill out the **REGISTRATION TO PARTICIPATE** form for details.

Space is limited, please reply quickly to reserve your table. For more info. or to be a sponsor, contact event chair Jeannette D'Onofrio

603-569-0078 or j@virgodesignstudio.com. See the GWAC website for more details: www.wolfeboroarts.org.

VIEWS OF THE SPACE FOR TABLESCAPES.....



TABLESCAPES Registration form (back)



REGISTRATION TO PARTICIPATE - RULES OF DISPLAY

All TABLESCAPES must have a theme. Participation is FREE. TABLESCAPES can be made by an individual, a team, business or organization. Credits will be listed at each table and in the PROGRAM GUIDE ("Table Stories" are requested for the program; 50 word max. about the materials, thought process and/or time and creative resources to produce your table display.)

Design elements must not stain the carpet. No REAL food/drink/ is permitted at the settings, for display or otherwise.

The space within a 2 ft radius of the table is needed for viewing - please ask if you need to exceed your TABLESCAPE.

All TABLESCAPES must be complete and ready to view by Thurs., April 4, 4:00pm and must be Taken Down by Mon., April 8, 6:00pm.

DISCLAIMER: The Governor Wentworth Arts Council retains the right to reject any tablescape theme if it contains political or sexual content. Further, GWAC is permitted to photograph any portions therein of the submitted tablescapes for advertising purposes. GWAC or the Inn on Main is not held liable for items broken, stolen or missing during the event dates as noted.

FOR SALE: Decorative elements (ie. centerpieces, dishes, skirts, or tabletop items) on your tablescape may be available for purchase beginning at the opening reception. No items will be permitted to be removed till the final take down date/time. A dollar amount must be submitted for items to be sold at registration. 80% of the sale goes to the participant, 20% goes to GWAC.

GWAC will issue checks to participants who sell portions of their Tablescapes. All checks payable to GWAC.

GWAC is a 501(c)(3) non-profit, arts, educational organization, your financial participation may be tax deductible.

!!!! IMPORTANT !!!!

Questions may be directed to the event chair, Jeannette D'Onofrio, 603-569-0078 or email: j@virgodesignstudio.com.

MAIL REGISTRATION by FEB. 15, 2019 to: "Tablescapes" c/o J. D'Onofrio 17 Grove St. Wolfeboro, NH 03894

(You will be notified via email when your theme is accepted/rejected. First come basis.)

(You may photocopy this application)

PLEASE PRINT

5th Annual TABLESCAPES "CREATIVE SETTINGS" Participation Form - April 2019

NAME (Individual Responsible for Tablescape) _____

BUSINESS / ORGANIZATION: _____

PHONE (cell) _____ EMAIL: _____

MAILING ADDRESS _____

THEME / TITLE OF TABLESCAPE _____

Do you require a special location? _____ NO _____ YES Please Explain _____

My 50 word "TABLE STORY" is enclosed _____ I am emailing My "TABLE STORY" _____ (to: j@virgodesignstudio.com)

AD SPACE: _____ I would like to purchase advertising space in the program @\$25 for Business Card size (3.5" x 2") full color .
(.pdf file sent via email to: j@virgodesignstudio.com)

One FREE Ticket to attend the Opening Cocktail Reception for: _____

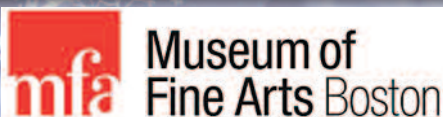
Advance Purchase **TICKETS TO ATTEND Opening Reception** for Thurs. April 5, 7:00pm @\$25/pp. # _____ of Tickets x \$25. = \$ _____

Make checks payable to: "GWAC" Mail all to: J. D'Onofrio, 17 Grove St., Wolfeboro, NH 03894

I will adhere to the terms and conditions of the event "Creative TABLESCAPE Settings" hosted by GWAC and understand that my TABLESCAPE will be constructed under the Rules of Display as noted above and I will conduct my creative tablescape by the standards as set forth for this event.

Responsible Participant Signature: _____

Date: _____



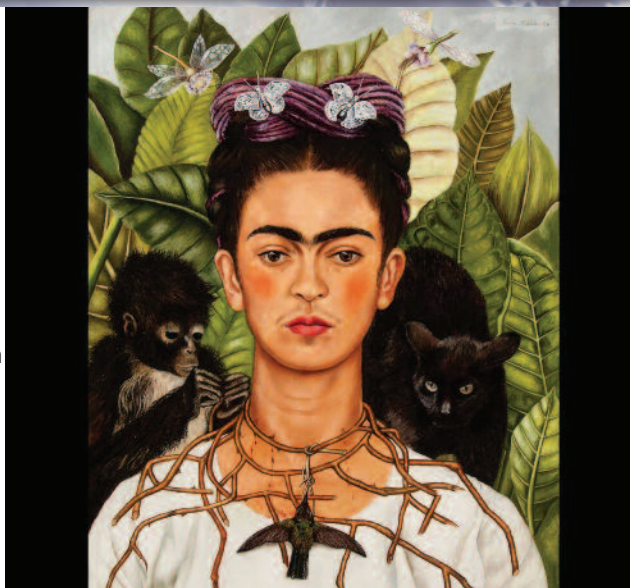
Frida Kahlo and Arte Popular

February 27, 2019 – June 16, 2019

Like many artists in Mexico City's vibrant intellectual circles, Frida Kahlo (1907–1954) avidly collected traditional Mexican folk art—*arte popular*—as a celebration of indigenous and mestizo cultures. She drew inspiration from these objects, seizing on their political significance after the Mexican Revolution and incorporating their visual and material qualities into her now iconic paintings.

Following the recent acquisition of *Dos Mujeres (Salvadora y Herminia)* (1928), this is the MFA's first exhibition on Frida Kahlo. It tightly focuses on Kahlo's lasting engagements with *arte popular*, exploring how her passion for objects such as decorated ceramics, embroidered textiles, papier-mâché effigies, and devotional retablo paintings shaped her own artistic practice.

A selection of Kahlo's paintings—including important loans from the Museum of Modern Art (MoMA), the Los Angeles County Museum of Art (LACMA), and the Harry Ransom Center at the University of Texas at Austin—is brought together with representative examples of *arte popular*. Bringing fresh attention to Kahlo as an ambitious, ever-evolving painter, this exhibition also opens broader discussions about the influences of anonymous folk artists on famed modern painters.



MANCHESTER, NH

Ubuhle Women: Beadwork and the Art of Independence

March 23 to June 16, 2019

Image: Ntombephi "Induna" Ntobela, My Sea, My Sister, My Tears, 2011, glass beads sewn onto fabric.

Ubuhle Women: Beadwork and the Art of Independence showcases a new form of bead art, the *ndwango* ("cloth"), developed by a community of women living and working together in rural KwaZulu-Natal, South Africa. Using skills passed down through generations and working "directly from the soul" (in the words of artist Ntombephi Ntobela), the Ubuhle women have created a multidimensional, contemporary art form by applying exquisite Czech glass beads onto plain black cloth, reminiscent of the Xhosa headscarves and skirts that many of the Ubuhle women wore growing up.

Ubuhle (pronounced Uh-Buk-lay) means "beauty" in the Xhosa and Zulu languages, and aptly describes the quality of light on glass that for the Xhosa people has a special spiritual significance. From every vantage point, the meticulous skill and labor that went into each work becomes strikingly apparent. A single panel can take more than 10 months to complete.



BRUNCH AT THE CURRIER

Join us on the second Sunday of every month from 10am to 2pm.

Enjoy a delicious brunch while being entertained by talented local musicians. The brunch menu features a lavish continental station, made-to-order omelets, pancakes, and French toast with plenty of tasty fixings, and other classic breakfast and lunch offerings.

To make a reservation, please call 603.669.6144 x108 during museum hours, Wednesday through Monday 11am to 5pm and Saturday from 10am to 5pm.

(GWAC does not benefit from the promotion of this event - simply informational for our members.)





GWAC's theme at the Annual Festival of Trees
"GWAC Nightmare Before Christmas - Making Christmas"
 team of talented craftpeople includes:
 Jerome Holden, Lorraine Drake & Kate Lizotte
 w/ assistance by Jeannette D'Onofrio

Here's a short peek as to how it was crafted...

